

**GEDORE**  
TOOLS FOR LIFE

# *E-TORC P*

*Electronic torque wrench*



# ***E-TORC P BY GEDORE***

***ELECTRONIC TORQUE WRENCH FOR DOCUMENTED  
SCREW CONNECTIONS IN PRODUCTION***

**The “E-torc P” electronic torque wrench by GEDORE simplifies and optimises safe screwdriving processes, and facilitates the complete traceability of screw connections in production and assembly that require documentation.**

With its high measurement accuracy in both torque and rotation angle measurements, the E-torc P meets the high requirements of the industry. Eight models cover a torque range from 1 to 1,000 N·m. The concise signalling system guides the operator safely to the desired target value even under difficult working conditions. In daily use, it also impresses with its lightweight and ergonomic construction. Whether wireless or wired, bidirectional communication and easy connection with production management systems facilitate uncomplicated integration into daily working life.





## **MULTIPLE MEASURING MODES**

Torque/rotary angle, glide value display, peak value measurement and preset measurement

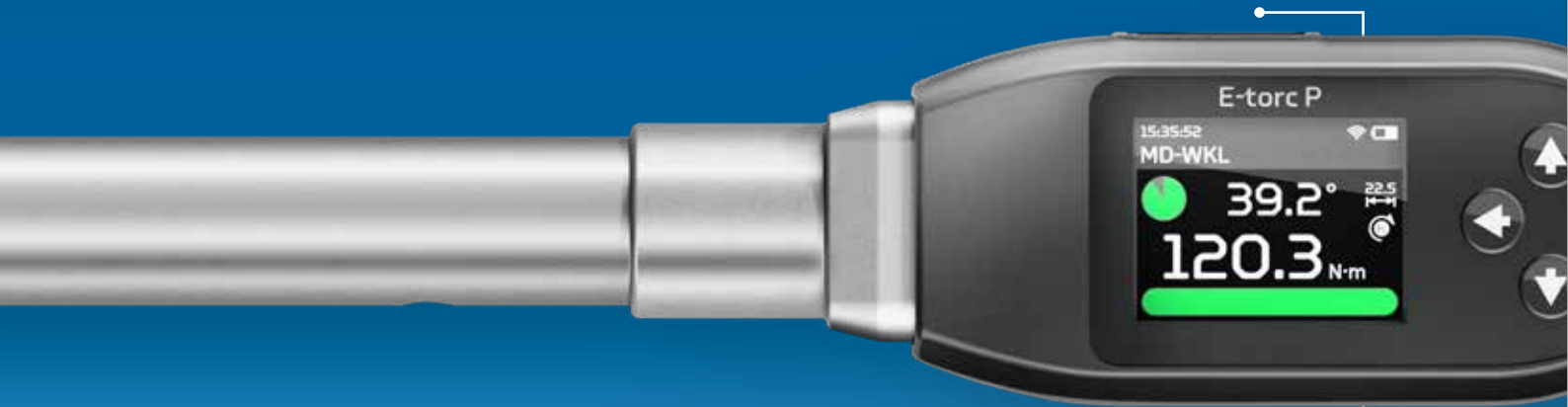
## **MAXIMUM PRECISION**

Torque: 1% +/- 1 digit  
Rotation angle: 1% +/- 1 digit, or 1°, whichever is greater:  
measured over a full 360° at 4°/sec

## FATIGUE-FREE AND EFFICIENT WORKING

**Ergonomic design,**  
lightweight construction,  
practical side button

High-contrast and  
viewing angle-stable  
**colour display**



## INTERFACES AND COMMUNICATION



**WiFi 2.4 and 5.0 GHz,**  
USB-C and optionally  
with Zigbee

**Data transfer**  
via Open Protocol or  
GEDORE Software Suite  
via ASCII protocol

**2D scanner** for reading  
barcodes, QR codes or  
data matrix codes

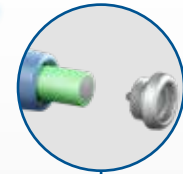


## ALWAYS READY FOR USE

**Wireless charging** via charging station, also for vertical wall mounting (sold separately)



**Replaceable lithium-ion battery** (18650), locking cover optionally with opening lock

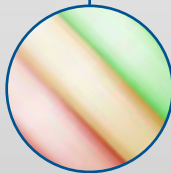


## INTUITIVE TO USE

**Concise signalling**  
Optically via 360° LED ring as well as by vibration and acoustics

**Easy menu navigation**  
including user management and 2 buttons for shortcuts

Stores up to **9,999 measurement data sets** and **100 measurement curves** as well as **150 work plans**



## USE

Electronic torque and angle wrench for production/assembly applications for screw connections requiring documentation.

## MEASURING MODES

Torque/rotary angle including curve recording, glide value display (track), peak value measuring and preset measuring

## FEATURES

- Concise signalling: Optically via 360° LED ring and physically by vibration and acoustics
- Memory capacity for up to 9,999 measurement data sets, 100 bolting curves and 150 work plans
- Easy menu navigation including user management and two buttons for shortcuts
- Work plans started via 2D scanner
- High-contrast and viewing angle-stable 2" IPS display
- Adjustable pitch gauge for different insertion tools



## ACCURACY

Torque: 1% +/- 1 digit

Rotation angle: 1% +/- 1 digit, or 1°, whichever is greater: measured over a full 360° at 4°/sec

## COMMUNICATION

- Bidirectional data transfer via WiFi 2.4 and 5 GHz, USB-C interface or Zigbee (optional)
- Connection to production management systems (MES) via Open Protocol or GEDORE Software Suite via ASCII protocol
- 2D scanner for reading barcodes, QR codes or data matrix codes

## CHARGING & STORAGE

- Replaceable lithium-ion battery (18650)
- Battery charge via USB-C interface, separate charger or wirelessly using the optional charging station

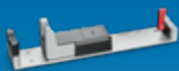
## INCLUDED IN DELIVERY

- Electronic torque wrench E-torc P
- USB-C cable and power adapter
- Li-ion battery
- Factory certificate
- USB stick with documentation, user instruction and software

## E-TORC P - MODELS

	Code	Nm	lbf.ft	Recess	Dimension L x W x H (mm)	Weight kg	
	ETCP-SE10	3479706	10	0.7 – 7.4	SE 9x12	367 x 57 x 47	0.907
	ETCP-SE30	3479714	30	2.2 – 22.1	SE 9x12	367 x 57 x 47	0.907
	ETCP-SE60	3479722	60	4.4 – 44.3	SE 9x12	367 x 57 x 47	0.907
	ETCP-SE100	3479730	100	7.4 – 73.8	SE 9x12	473 x 57 x 47	1.128
	ETCP-SE200	3479749	200	14.8 – 147.5	SE 14x18	619 x 57 x 47	1.488
	ETCP-SE400	3479757	400	29.5 – 295	SE 14x18	836 x 57 x 47	2.286
	ETCP-Z600	3479765	600	44.3 – 442.5	Z22	1062 x 57 x 47	3.03
	ETCP-Z1000	3479773	1000	73.8 – 737.6	Z28	1495 x 57 x 47	5.6

## ACCESSORIES & SERVICES



### ETCP-LST charging station

Wireless charging station with intelligent battery charge management and charge status indicator. Mounting holes, also for space-saving vertical wall mounting.



### Calibration

to DKD-R 3-7 Class 1 including calibration certificate.



### Free software

to evaluate the data. Data is stored via SQLite (local) or SQL server.

## E-TORC P - CHARGING STATIONS

Code	Code	Code	Code
ETCP-LST 10-60	3479811	ETCP-LST 200	3479846
ETCP-LST 100	3479838	ETCP-LST 400	3479854
		ETCP-LST 600	3479862
		ETCP-LST 1000	3479870

# GEDORE

TOOLS FOR LIFE



## GEDORE WERKZEUGFABRIK GMBH & CO. KG

Remscheider Straße 149  
42899 Remscheid · Germany

[info@gedore.com](mailto:info@gedore.com)

Tel. + 49 (0) 21 91- 596 - 900  
Fax + 49 (0) 21 91- 596 - 999

[gedore.com](http://gedore.com)