

RRP SERVICE PRICE LIST

valid from 01.01.2024



In-house calibration incl. calibration certificate



Mechanical torque wrenches & Torque Screwdrivers

DIN EN ISO 6789:2017 Part 2*

- > In-house certificate for GEDORE torque wrench up to 1000 Nm
- > In-house certificate for GEDORE torque wrench 1001 Nm up to 3000 Nm

€ 50.-
€ 101.-

Third-party items

Testing of third-party articles is possible in accordance with DIN EN ISO-6789:1, chapter 6, if testability is established.

For this we charge a lump sum of € 97.- for mechanical torque wrenches. Electronic torque wrenches are processed at cost. You will receive a cost estimate.

Repairs incl. calibration certificate



Pipe torque wrenches

DIN EN ISO 6789:2017 Part 2*

- > All-in-one service charge to 200 Nm including in-house certificate
- > All-in-one service charge 201 Nm - 550 Nm including in-house certificate
- > All-in-one service charge 551 Nm - 850 Nm including in-house certificate

€ 65.-
€ 74.-
€ 101.-



Aluminium torque wrenches

DIN EN ISO 6789:2017 Part 2*

- > All-in-one service charge 1/4" - 3/8" (type: Mini/A/AM/A-SE/AZ) including in-house certificate
- > All-in-one service charge 1/2" (type: B/C/B-SE/C-SE/BZ/CZ) including in-house certificate
- > All-in-one service charge 3/4" (type: CD/DS/D/DR/DX/DZ/DXZ) including in-house certificate
- > All-in-one service charge 1" and bigger (type: E/F) including in-house certificate

€ 101.-
€ 112.-
€ 163.-
€ 245.-



VDE torque wrenches

to DIN EN ISO 6789:2017 Part 2

- > All-in-one service charge (type 4508) including in-house certificate and individual inspection to VDE DIN 60900

€ 101.-



Mechanical torque wrenches & Torque Screwdrivers

DIN EN ISO 6789:2017 Part 2

- > All-in-one service charge Type CRS / QS(A) / QS / Quickset including in-house certificate
- > All-in-one service charge Type ATB / TBN / TSC / TSN including in-house certificate
- > All-in-one service charge Type ADS including in-house certificate
- > All-in-one service charge Type BDS including in-house certificate
- > All-in-one service charge Type CDS including in-house certificate
- > All-in-one service charge Type DDS including in-house certificate
- > All-in-one service charge Type EDS including in-house certificate

€ 87.-
€ 108.-
€ 138.-
€ 179.-
€ 282.-
€ 343.-
€ 384.-

The factory calibration does not fulfil the requirement of traceability.

RRP SERVICE PRICE LIST

valid from 01.01.2024

Repairs of further hand tools



(slip-on, slip-in) ratchet GEDORE/Rahsol

- > All-in-one service charge 1/4" € 20.-
- > All-in-one service charge 3/8" € 25.-
- > All-in-one service charge 1/2" € 25.-
- > All-in-one service charge 3/4" € 35.-
- > All-in-one service charge 1" € 55.-



Telescopic ratchet

- > All-in-one service charge € 54.-



Swivel head reversible ratchet

- > All-in-one service charge € 54.-



Reversible ratchet with insert ring

- > All-in-one service charge € 54.-



Combination ratchet spanner 7R/7UR

- > All-in-one service charge up to 15 mm € 10.-
- > All-in-one service charge up to 24 mm € 20.-
- > All-in-one service charge up to 36 mm € 55.-



Pipe Cutter

- > Price on demand



Manual bending tool

- > Price on demand



RRP SERVICE PRICE LIST

valid from 01.01.2024



In-house calibration including calibration certificate for torque wrenches

Electronical torque wrenches



- > All-in-one service charge 0,2 – 1.000 Nm to GEDORE in-house standard
- > Inclusive counter clockwise calibration
- > Inclusive angle calibration

€ 440.-
€ 358.-
€ 317.-

For your safety, we recommend always having a rotation angle calibration carried out in addition to the torque calibration.

In-house calibration with calibration certificate for electronic test equipment



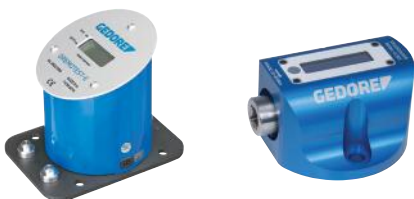
ETP

Capture Hub

ETP / Capture Hub

- > 0,2 - 1.100 Nm to VDI 2646
- > 300 - 3.150 Nm to VDI 2646
- > Inclusive counter clockwise calibration up to 1.100 Nm
- > Inclusive counter clockwise calibration from 300 Nm - 3.150 Nm

€ 327.-
€ 1,178.-
€ 265.-
€ 973.-



Dremotest E

Capture Light

Dremotest-E / Capture Light

- > 0,2 - 1.100 Nm to VDI 2646
- > 8612-3150 and Capture Light 3000 to VDI 2646

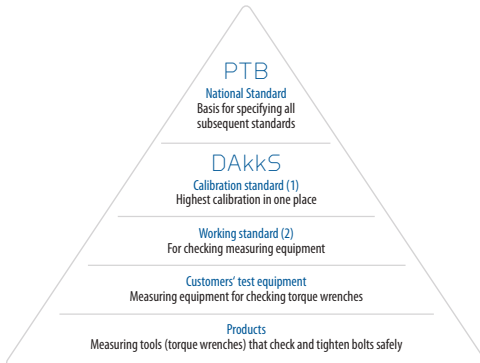
€ 266.-
€ 460.-

For repairs of the above mechanical items, replacement parts and processing will be invoiced at the level of outlay.
The factory calibration does not fulfil the requirement of traceability.

RRP SERVICE PRICE LIST

valid from 01.01.2024

Calibration in the DAkkS-accredited calibration laboratory



Adjustable clicker torque wrenches DIN EN ISO 6789:2017 Part 2

- > All-in-one service charge (range 0.2 – 1,000 Nm)
- > Additional counter clockwise calibration

€ 255.-
€ 204.-

Electronic and dial measuring torque wrenches DAkkS-DKD-R 3-7

- > All-in-one service charge (range 0.2 – 1,000 Nm)
- > Additional anti-clockwise calibration
- > Additional Angle calibration (range 0.2 - 300 Nm) according to VDE/VDE 2648-2 CW/CCW without 4.6

€ 757.-
€ 593.-
€ 593.-

Torque test equipment DAkkS-DKD-R 10-8

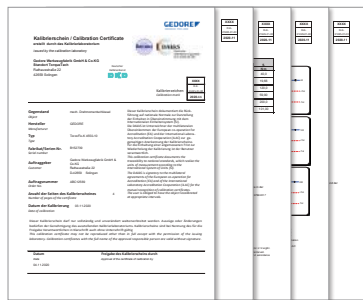
- > All-in-one service charge (range 0.2 – 1,100 Nm)
- > All-in-one service charge (range 1,100 – 3,000 Nm)

€ 757.-
€ 1,331.-

CERTIFIED PRECISION

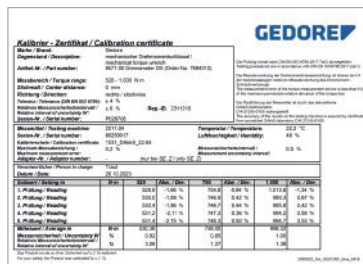
We give you the security you need

PTB
NATIONAL
STANDARD
Basis of all
lower-order standards



- Direct traceability to the national standard
- DAkkS calibrations according to DAkkS guidelines: DKD-R 3-7:2018; DKD-R 3-8:2018 and DIN EN ISO 6789-2:2017
- Passing on the smallest possible measurement uncertainties
- DAkkS calibration of own and third-party products (*Repair and adjustment of third-party products is not possible*).
- Air-conditioned laboratory control under strictest conditions
- DAkkS calibration certificate and DAkkS calibration mark

DAKKS
ACCREDITED
CALIBRATION
LABORATORY OF
GEDORE WERKZEUGFABRIK
GMBH & CO. KG
ACCESSORIES STANDARD
Highest standard
Accredited area according to
DIN EN ISO 17025:2018



- Indirect traceability to the national standard
- Factory calibration according to DIN EN ISO 6789-2:2017 or GTTWN001
- Factory calibration, if necessary with adjustment and repair (*only for in-house production*)
- Factory test certificate and factory calibration mark from the Calibration laboratory of GEDORE Werkzeugfabrik GmbH & Co.KG

GEDORE
USAGE STANDARD
For testing
measuring devices

FACTORY CALIBRATION CERTIFICATE ACCORDING TO DIN EN ISO 6789-2:2017

- It contains all the information about the calibration object, required according to DIN EN ISO 6789-2:2017 (e.g. classification, measurement results, measurement uncertainty).
- The calibration is performed on suitable measuring equipment, which comply with the standard DIN EN ISO 6789-2:2017.
- The calibration result shall be reported together with a measurement uncertainty part according to DIN EN ISO 6789-2:2017.



CUSTOMER TEST EQUIPMENT
Measuring devices for monitoring
torque wrenches

PRODUCTS
Measuring tools (torque wrenches)
which check and tighten bolts safely

RRP SERVICE PRICE LIST

valid from 01.01.2024



Additional information

Repairs and calibrations

In order to reduce order processing times and costs with you, we charge standard rates for repairs to mechanical GEDORE torque wrenches. No prior information regarding charges can therefore be provided. **If a repair cannot be carried out for the all-in-one charge listed here, an cost estimate will be provided in advance for your approval.**

Repairs that cannot be carried out

We will inform you in writing if a repair is not possible due to age or the extent of the damage, and will discuss the further course of action with you.

Warranty claims

All complaints will be thoroughly investigated. Processing under warranty is not possible if the complaint is down to incorrect handling. In this instance, we will inform you of the repair costs in the form of a cost estimate. If a production or material flaw is found, or if it is not possible to establish the exact cause, the complaint will be accepted. The item will then be repaired free of charge.

Order processing times

The order processing time for mechanical torque wrenches from our own production is currently approx. 5 working days from receipt of the goods plus shipping. All electronic torque wrenches and test equipment will require a processing time of approx. 10 working days from receipt of the goods plus shipping.

Express service

Express service for mechanical torque wrenches within 24 hours after receipt of goods - € 49.- surcharge per wrench.

Express service for electronic items from our company within 5 days after receipt of goods - € 99.- surcharge per item.

Certificates of receipt

On customer's request we are pleased to issue certificates of receipt for your torque wrenches. The price corresponds to the respective calibration price.

Fixed setting of mechanical GEDORE torque wrenches

Adjustment of the torque wrench to a fixed value against € 30.-. The subsequent calibration incl. certificate will be charged with the regular calibration price.

Engraving of GEDORE torque wrenches

Torque wrench engraving of your choice against € 30.-.

*Models developed before 2016 may be calibrated according to the version of DIN EN ISO-6789 valid at that time.

All prices quoted are exclusive of VAT and freight charges of € 5.80 within Germany.
Technical changes and errors excepted.

ORDER FORM

GEDORE Werkzeugfabrik GmbH & Co. KG
Business Unit Service
Remscheider Str. 149
42899 Remscheid

In-house calibration ☐
DKD calibration ☐
Repair ☐
Warranty claims ☐

Service-Shipment

Please enclose this form with your return.

Sender:

Company / Department
Contact
Building no. / Street
Town / Postcode
Tel. / fax
Email
VAT ID
Your order / job no.

Item no.
Serial no.
Quantity

Description of fault
.....

Product addressee
(only if different from above address)

Invoice and e-mail address
(only if different from above address)

.....
.....
.....
.....

Date / Signature / Official stamp